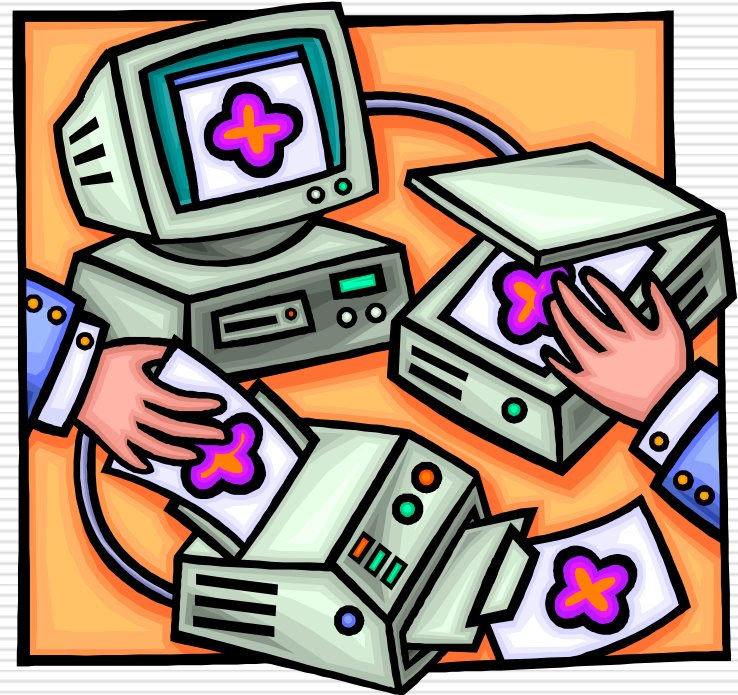


Networks

Computer Technology Day 17

Network

- Two or more computers and other devices (printers or scanners) that are connected, for the purpose of sharing data and programs



Network Terms

File Server

- A computer connected to a network that distributes resources to other users
 - Contains the software to manage and process files for other network users

Host Computer

- Refers to any computer that provides services to network users
 - Used more commonly with the Internet

Network Terms (continued)

□ Workstation

- Refers to a personal computer connected to a network

□ Example

- Each computer in the classroom

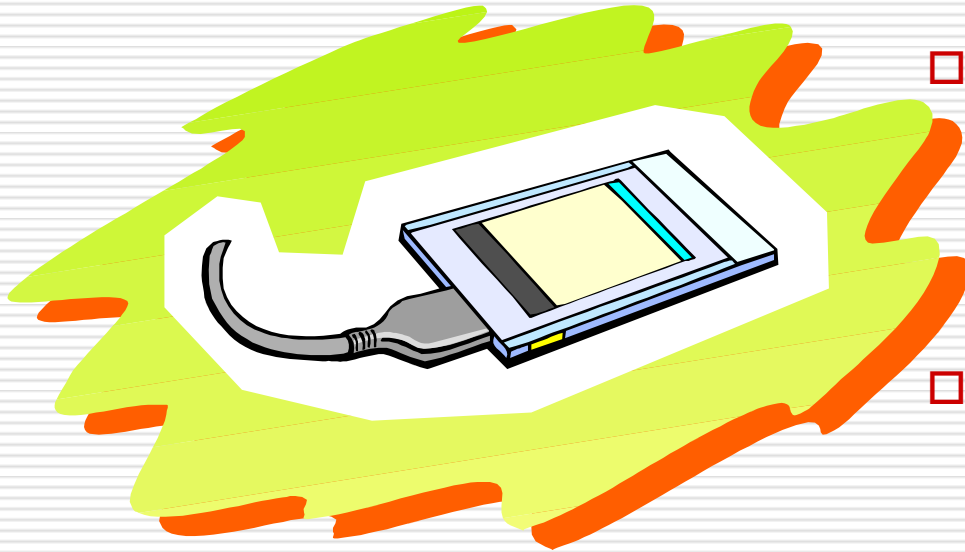
□ Client

- Refers to the software on a computer that allows the user to access the server

□ Example

- Novell Netware

Network Interface Card (NIC)



- Small circuit board that converts the digital signals from a computer into signals that can travel over a network
- Desktop Computers have the NIC inside the case with a jack on the outside for the network cable
 - Example
 - Our classroom computers
- Notebook or Laptop Computers have a special card that fits into a slot or opening in the case
 - Example
 - Picture on this slide is the NIC for a Notebook or Laptop

Network Connections Devices

- Modem
 - A device that sends and receives data to and from computers over telephone lines.
- Hubs
 - A device that connects several components of a network
- Routers
 - A device that connects at least two networks
- Gateway
 - A device that serves as an entrance to another network
- All of these can be used alone or combination

Local Area Network (LAN)



- Computer network that is located within a limited geographical area, such as a school or small business
 - Example
 - The PGHS Network

Wide Area Network (WAN)

- Interconnected group of computers and peripherals that cover a large geographical area, such as multiple buildings
 - Examples
 - The Alpine School District Network
 - The Internet



IP Addresses

- A unique identifying number assigned to each computer connected to the internet
 - Example – 204.127.102.001
 - Each computer on a network should have its own separate IP Address or conflicts will occur when there are duplicate addresses

Resources

Parsons, June Jamrich, and Dan Oja.
Computer Concepts. Boston: Course
Technology - Thompson Learning,
2002.